



# John Deere Tech



**OLDS  
COLLEGE**

**2008**

# **JOHN DEERE**

## **TECH PROGRAM**

### **PROGRAM INFORMATION**

(Apprenticeship related information)

During each of four years the John Deere Ag Tech Apprentice works approximately nine to ten months at a sponsoring dealership and receives ten weeks of technical training at Olds College. Upon successful completion of the program, apprentices will qualify for the following certification:

- Agricultural Equipment Technician Journeyman
- Inter-Provincial Agricultural Equipment Technician Certification
- John Deere/Olds College JD Tech Completion Award

# Table of Contents

**Program Overview** .....1

**Admission Requirements**

High School Transcripts .....2

Dealer Sponsorship .....2

**Candidate Application for Admission** .....3

**Dealer Approval Form** .....4

**Contacts** .....5

**Program Format** .....6

**Responsibilities of Participants**

Apprentice .....7

John Deere Limited .....7

John Deere Dealership .....8

Olds College.....8

**Hints on Finding a Sponsor** .....9

**Curriculum** .....10

**Course Descriptions**

First Period .....11

Second Period .....13

Third Period .....15

Fourth Period .....17

**Suggested Tool List** .....19

**Map of the College** .....20

## Program Overview

The John Deere Tech program is an educational program designed to upgrade the technical competence and professionalism of apprentice agricultural equipment technicians. The program is sponsored by John Deere Limited, Grimsby Branch; the curriculum has been designed by Alberta Apprenticeship & Industry Training via input from industry representatives, John Deere Limited and Olds College. Completion of the program qualifies apprentices for journeyman status as an Agricultural Equipment Technician. Program graduates will also receive a John Deere Tech Completion Award conferred by John Deere Limited and Olds College.

The JD Tech program can be completed in approximately 48 months. Apprentices work for a dealer and participate in classroom lectures and laboratory experiences at Olds College, related to repair and overhaul of agricultural and heavy equipment. The program consists of training on a wide variety of agricultural machinery with an emphasis on John Deere agricultural products. The curriculum is designed so that work experience at the dealership relates, as much as possible, to the specialized course work completed at Olds College. The program requires the student to have a sponsoring John Deere dealership. If necessary, the student can request assistance from Olds College in locating a sponsoring dealership. The main responsibility of the dealership is to provide training-related employment for the apprentice during the work experience periods.

Because program participants are indentured as apprentices, unemployment insurance benefits are available to them while attending apprenticeship training. An additional fee for the two weeks of specialty training during each period will be charged to the student. Any financial arrangements between the apprentice and the dealership are the responsibility of the apprentice and the sponsoring dealership. Textbook costs are the responsibility of the apprentice.

In addition to tuition fees and textbook costs, apprentices will require a basic set of hand tools for their trade. A suggested tool list is included in this booklet.

Information contained in this booklet is correct at the time of printing. Prospective students and employers should be aware that the Agricultural Equipment Technician and the John Deere Tech Program curriculums may undergo slight changes from year to year and this guide book will reflect these changes. Students and employers are invited to contact the coordinator of the JD Tech program at Olds College if they require details that are more exact.

## Admission Requirements

### High School Transcripts

Applicant's transcripts must read completion of grade 12 with Math 13 or Applied Math 10 or the applicant must pass an equivalency entrance examination as prescribed by the trade regulation.

### Dealer Sponsorship

Applicants must be employed and sponsored by an authorized John Deere Dealership. It is the responsibility of the applicant to secure this sponsorship

### Application for Apprenticeship

Application for apprenticeship can be requested from Olds College or from an Alberta Apprenticeship and Industry Training Office. Applications should be completed and returned to an Alberta Apprenticeship and Industry Training Office. Please specify that the apprenticeship training selected is **Agricultural Equipment Technician**.

- Contact your nearest Alberta Apprenticeship and Industry Training Office or Olds College for application details.
- Obtain an application form from Alberta Advanced Education and Career Development Centre or Olds College or visit [www.tradesecrets.org](http://www.tradesecrets.org) on the Internet
- Complete the application form and return it to an Alberta Apprenticeship and Industry Training Office.
- With the employer, discuss the possibility of time credit for previous experience in the Agricultural Equipment Technical. The Employer must indicate requests for prior time credit on the application form.
- Sign a contract of apprenticeship (between the apprentice and the sponsoring dealership) within three months of the date that the apprenticeship application has been approved.
- Fill out and return to Olds College the Olds College John Deere Tech program candidate application form, and the Dealer Approval form.
- Upon completion of these requirements, applicants will be notified of their admissions status. When the program reaches capacity, additional applicants will be placed on standby status pending an opening.



## DEALER APPROVAL FORM

Applicant's Name: \_\_\_\_\_ Apprentice Number \_\_\_\_\_

\*Applicant: Please mail this form to Olds College along with your candidate's application form.

**DEALER INTERVIEW:** Please review the following points with the applicant before he/she makes application into the Olds College John Deere Ag Tech program.

1. The applicant has completed the apprenticeship application and contract and has their record book.
2. The applicant understands that apprenticeship training at Olds College comes under the jurisdiction of Alberta Apprenticeship and Industry Training and uses a curriculum approved by the Agricultural Mechanics Provincial Apprentice Committee.
3. The Olds College John Deere Tech portion of the apprenticeship consists of two extra weeks of training at Olds College at the end of the regular training periods and is for John Deere sponsored apprentices only.
4. The apprentice is required to pay one half of the apprentice tuition on an application for class and the remainder on day one of class.
5. Tuition will be billed to the apprentice on a yearly basis.
6. The applicant should express a strong desire to be a professional Agricultural Equipment Technician. Are his/her goals consistent with the dealerships needs for the next few years?

**DEALER APPROVAL:** I recommend this applicant for inclusion in the Olds College John DeereTech program and agree to provide sponsorship.

\_\_\_\_\_  
Dealer/Authorized Representative

\_\_\_\_\_  
Title

\_\_\_\_\_  
Dealership

\_\_\_\_\_  
Telephone

\_\_\_\_\_  
City/Province

\_\_\_\_\_  
Postal Code

\_\_\_\_\_  
Date

## CONTACTS

Olds College encourages applicants to secure a dealer sponsorship as early as possible.

Additional information regarding the Olds College/John Deere Tech program is available from the following contacts:

**Mr. Dan Daley**

Coordinator, John Deere Tech Program  
School of Agriculture, Business & Technology  
c/o Olds College  
4500 50 Street  
Olds, AB  
T4H 1R6  
Telephone: (403) 556-8272  
Fax: (403) 556-4712  
ddaley@oldscollege.ca

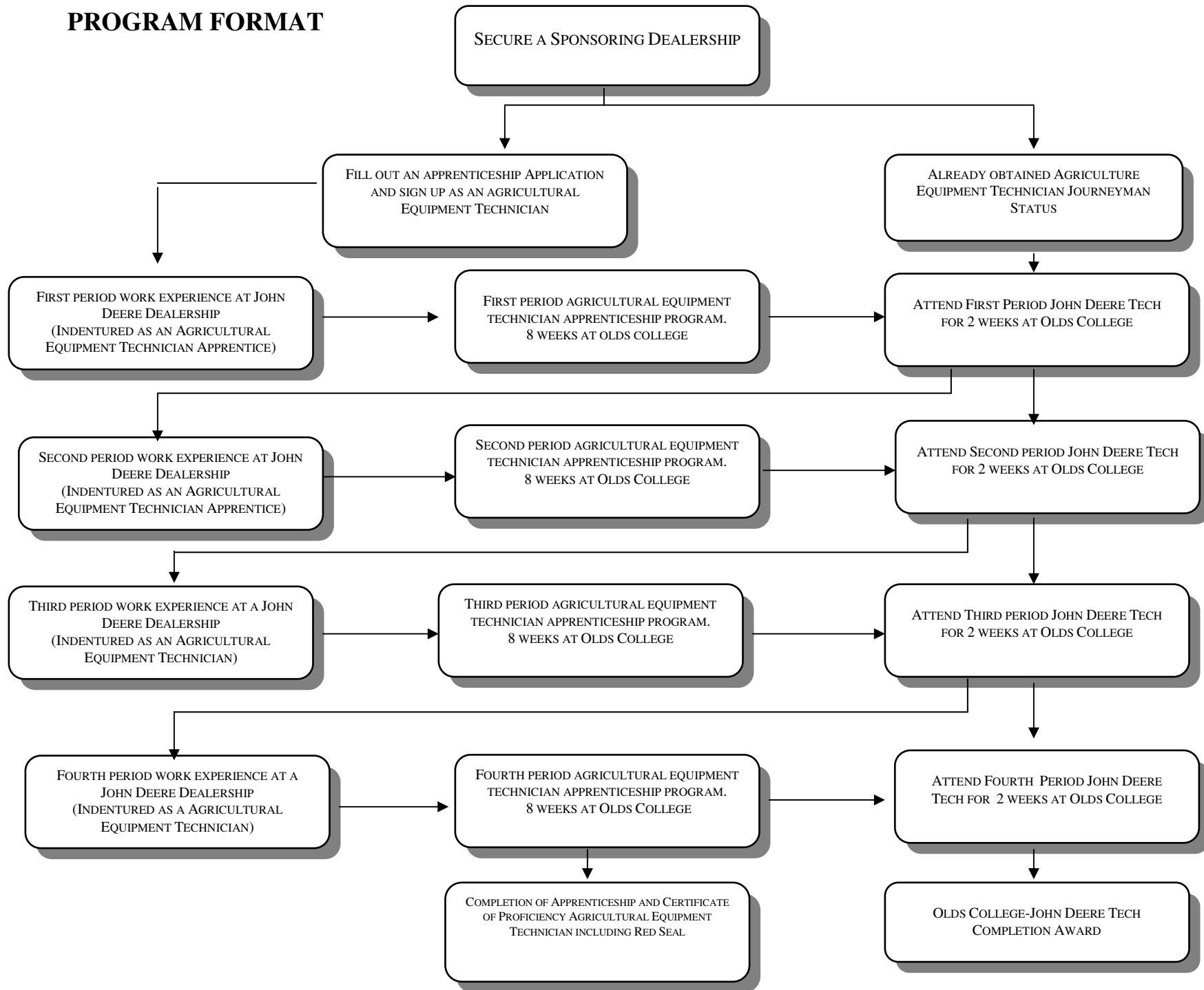
**Mr. Dick Thomson**

Chair  
School of Agriculture, Business & Technology  
c/o Olds College  
4500 50 Street  
Olds, AB  
T4H 1R6  
Telephone: (403) 556-8258  
Fax: (403) 556-4712  
dthomson@oldscollege.ca

**Mr. Tien MacDonald**

Manager, College Partnerships  
John Deere Limited  
455 Park St.  
Regina, Sask.  
S5N 5B2  
Telephone: (306)791-3216  
Fax:  
MacDonaldTienR@JohnDeere.com

**PROGRAM FORMAT**



## **RESPONSIBILITIES OF PARTICIPANTS**

### **Apprentice**

- Meet specified admission and academic requirements established by Alberta Apprenticeship Industry Training and John Deere Limited.
- Obtain and maintain sponsorship with a John Deere dealership throughout the duration of the training.
- Maintain academic standards and adhere to academic policies consistent with Alberta Apprenticeship Industry Training and Olds College.
- Wear uniforms, safety glasses and protective footwear while on campus in accordance with the requirements of Olds College and John Deere Limited.
- Participate in all learning activities at the scheduled times.
- Provide the sponsoring dealership with responsible and productive employment.
- Be responsible for selected program costs: partial tuition, books, tools, and meals and accommodation.
- Act in accordance of the code of conduct of Olds College.

### **John Deere Limited**

- Encourage dealer cooperation and support.
- Provide specialized training for John Deere Tech instructors/Coordinator.
- Furnish Olds College with John Deere training equipment (manuals, components, essential and special tools, complete machines).
- Provide Olds College with essential training materials (including technical publications and training aids).
- Oversee and participate in applicant selection procedures.
- Oversee and participate in instructor/liaison officer selection procedures.
- Monitor all phases of the John Deere Tech program to assure success.
- Provide on-line assistance to technical information.
- Through the John Deere Foundation, provide two \$500.00 interim scholarships. Eligibility is based on two students, one for a student returning to second session JD TECH, and one for a student returning to fourth session JD TECH.

## John Deere Dealership

- Indicate to Olds College interest in participating as a sponsoring dealership.
- Recruit apprentices for the program.
- Interview and select sponsored applicants.
- Appoint an in-dealership coordinator to assist Olds College's John Deere Tech instructor/coordinator in planning and monitoring the work experience.
- Provide appropriate work experience that reinforces the trainee's most recent classroom instruction.
- Pay apprentices during periods of dealership work experience.
- Provide the Tech apprentice with uniforms as used in the dealership. Recommend that the dealer supply five (5) shirts and two (2) coveralls for each Ag Tech apprentice.

## Olds College

- Maintain the curriculum approved by Alberta Apprenticeship and industry Training and John Deere Limited.
- Provide classroom and laboratory facilities for educational purposes.
- Provide John Deere trained instructors (one instructor will act as liaison between the College and John Deere and will serve on a John Deere Tech Advisory Committee).
- Provide specialty equipment and tools.
- Promote, advertise, and recruit qualified applicants.
- Where applicable test applicants, and assist dealerships with apprentice selection.
- Maintain an JD Tech database.
- Provide customary student services such as academic advisement, financial aid, counseling, etc.
- Encourage dealer personnel to assure attainment of work experience competencies.
- When requested furnish program information to the public.
- Provide secure storage areas for training aids, special tools, parts/components and complete machines and accessories.

## Hints on Finding a Sponsor

**Note:** You may at any time speak to any dealership about the John Deere Tech Program. However, you are accepted into the program only after official acceptance occurs, and only after all assessment, application and dealer sponsorship and apprenticeship forms have been approved by Olds College and Alberta Apprenticeship and Industry Training.

Key points to remember:

- John Deere dealerships are independent businesses; they are not employees of John Deere Limited.
- When looking for a sponsor, you are looking for a job.
- Olds College and John Deere Limited can provide limited assistance in giving guidance and in identifying sponsoring dealerships.
- Olds College does not assign you a sponsor.
- As a John Deere Tech apprentice you are an employee, as well as an apprentice.
- Some John Deere dealerships may not participate in the program.
- The interview - Call ahead for an appointment:
- *Be prepared: clean, neat, and confident*

## CURRICULUM

FIRST PERIOD	
Topic	Hours
Safety, Basic Materials, Tools and Skills	36
Electric Welding and Oxy fuel Cutting	30
Basic Electrical	54
Basic Hydraulics	30
Agricultural Equipment	66
Power Train I	24
<b>APPRENTICESHIP TOTAL</b>	<b>240</b>
Topic	Hours
JD Electrical	24
JD Hydraulics	20
Service Advisor I	26
<b>JOHN DEERE TECH TOTAL</b>	<b>70</b>
<b>SUBTOTAL</b>	<b>310</b>

SECOND PERIOD	
Topic	Hours
Engine Fundamentals, Service and Repair	75
Engine Systems	30
Diesel Fuel Systems	40
Electronic Fuel Management	45
Heavy Duty Charging and Cranking Systems	50
<b>APPRENTICESHIP TOTAL</b>	<b>240</b>
Topic	Hours
Advanced JD Engines	36
Tractor Performance	12
AMS I	12
Treating Customers Right	12
<b>JOHN DEERE TECH TOTAL</b>	<b>72</b>
<b>SUBTOTAL</b>	<b>312</b>

THIRD PERIOD	
Topic	Hours
Spraying Equipment	30
Air Conditioning & Heating Systems	33
Power Trains II and Preventive Maintenance	53
Agricultural Harvesting Equipment	38
Seeding Equipment, Workplace Coaching, Skills and Advisory Network	23
Braking Systems	24
Precision Farming Systems	39
<b>APPRENTICESHIP TOTAL</b>	<b>240</b>
Topic	Hours
JD Harvesting and Seeding Equipment	44
AMS II	20
Personal Finance	8
<b>JOHN DEERE TECH TOTAL</b>	<b>72</b>
<b>SUBTOTAL</b>	<b>312</b>

FOURTH PERIOD	
Topic	Hours
Advanced Hydraulics	114
Steering and Suspension Systems and Accessories	34
Power Train III	92
<b>APPRENTICESHIP TOTAL</b>	<b>240</b>
Topic	Hours
Service Advisor II	20
JD Air Conditioning and Heating systems	20
JD Powershift Diagnostics	6
Field Service Technician	6
Personal Finance	6
Graduation	4
<b>JOHN DEERE TECH TOTAL</b>	<b>62</b>
<b>SUBTOTAL</b>	<b>302</b>

## Course Descriptions

### FIRST PERIOD AGRICULTURAL EQUIPMENT TECHNICIAN

<p><b>Safety, Basic Materials, Tools and Skills</b></p> <p>This course addresses safety, housekeeping practices, lifting procedures, fire prevention, communication, materials, fasteners, sealing systems, precision measuring and hand tools</p>	<b>36 hours</b>
<p><b>Electric Welding and Oxy Fuel Cutting</b></p> <p>This course covers welding safety, oxy-fuel equipment, shielded metal arc welding, and gas metal arc welding</p>	<b>30 hours</b>
<p><b>Basic Electrical</b></p> <p>Basic electrical principles and the applications of Ohm's law, magnetism, and electromagnetism are covered. Diagnostic procedures of electrical circuits are demonstrated with the use of schematics. The design, construction, and safe testing of lead acid storage batteries are also covered.</p>	<b>54 hours</b>
<p><b>Basic Hydraulics</b></p> <p>This course covers the principles, applications and theory of fluid power as it applies to agricultural machinery. Functions and operating principles are explained for the reservoirs, filters hoses, coolers, pumps, valves, cylinders and accumulators as these pertain to the hydraulic systems.</p>	<b>30 hours</b>
<p><b>Agricultural Machinery Theory and Demonstration</b></p> <p>This course covers tractor performance, suspension and steering on agricultural equipment, cutting, baling tillage and other related agricultural equipment.</p>	<b>66 hours</b>
<p><b>Power Trains I</b></p> <p>Power Trains I is a service and diagnostic course covering clutches, drive lines, universal joints, differentials and drive axles. Basic gearing principles are also covered in this course.</p>	<b>24 hours</b>
<p><b>Apprenticeship Technical Training</b></p>	<b>66 hours</b>
	<b>240 hours</b>

**FIRST SESSION JOHN DEERE TECH****JD Electrical****30 hours**

This course builds on the Basic Electrical course covered in the regular apprentice course with emphasis on John Deere equipment. The student should be able to successfully write the EC 2000 exam at the end of this session.

**JD Hydraulics****20 hours**

This course compliments the Basic Hydraulics covered in the regular apprentice 1<sup>st</sup> period course, with specific emphasis on John Deere equipment. The student should gain sufficient information to be able to successfully write the Protect Hyd 2000 examination at the end of this session.

**Service Advisor I****20 hours**

Students are introduced to the John Deere service advisor system; solutions to simple problems will be covered. At the end of this course students will write the Service Advisor Certification Test.

**JD Tech Training****70 hours****Work Experience Required****1500 hours**

## SECOND PERIOD AGRICULTURAL EQUIPMENT TECHNICIAN

<p><b>Engine fundamentals , Service and Repair</b></p> <p>This course is an introduction to the repair of multi-cylinder two and four stroke internal combustion engines. Students will be required to disassemble an engine, make all routine engine measurements and perform selected engine machining and repair operations.</p>	<p><b>75 hours</b></p>
<p><b>Engine Systems</b></p> <p>This course familiarizes the student with common induction, exhaust, turbo chargers, lubrication, crankcase, and cooling systems found on diesel engines.</p>	<p><b>30 hours</b></p>
<p><b>Diesel Fuel Injection Systems</b></p> <p>Students are instructed in the area of safe handling and storage of diesel fuel, the combustion processes, basic fuel injection systems, fuel system service, port and helix fuel systems opposed plunger inlet metered fuel systems, engine governor theory and operation, and fuel injector fundamentals and service.</p>	<p><b>40 hours</b></p>
<p><b>Electronic Fuel Management</b></p> <p>This section covers the retrieval and interpretation of diagnostic information from electronically managed engine fuel systems. Also covered in this section is the variety of common designs of electronic controlled fuel systems used in the industry and the performance analysis and tune up procedures available.</p>	<p><b>45 hours</b></p>
<p><b>Heavy Duty Charging and Cranking Systems</b></p> <p>This course covers the fundamentals and service of cranking and charging in both 12 and 24 volt systems. Also covered in this course is non-electric cranking systems.</p>	<p><b>50 hours</b></p>
<p><b>Apprenticeship Technical Training</b></p>	<p><b>240 hours</b></p>

## SECOND SESSION JOHN DEERE TECH

<p><b>Advanced JD Engines</b> The student will be introduced to the latest developments in John Deere engines. Operation and diagnostics are also discussed.</p>	<b>36 hours</b>
<p><b>Tractor performance</b> This section builds on the students' knowledge of tractor performance as it pertains to proper ballasting and engine performance. Engine emission regulations and dynamometer procedures are also covered in this course.</p>	<b>12 hours</b>
<p><b>Treating Customers Right</b> This course enables the student to acquire the knowledge required to deal with customer situations that may arise in the dealership situation.</p>	<b>12 hours</b>
<p><b>Ag Management Solutions (AMS)</b> This course introduces the student to John Deere's AMS system. AMS is an integrated system utilizing Greenstar information collected from tillage, planting, spraying, and harvesting operations, to provide documentation to increase return on producer's investments. Upon completion, students will be able to understand and operate the AMS system with confidence.</p>	<b>12 hours</b>
<p><b>JD Tech Training</b></p>	<b>72 hours</b>
<p><b>Work Experience Required</b></p>	<b>1500 hours</b>

## **THIRD PERIOD AGRICULTURAL EQUIPMENT TECHNICIAN**

<p><b>Spraying Equipment</b> This course will emphasis safety, sprayer monitory systems, sprayer suspension systems and new advances in spray technology.</p>	<b>30 hours</b>
<p><b>Air Conditioning and Heating System</b> The basic of air conditioning and heating systems are covered in this section service, inspection, diagnosis, testing and electronic controls are covered. Time will be spent on refrigerants, oils, retrofitting and CFC/HCFC Certification.</p>	<b>33 hours</b>
<p><b>Power Train II and Preventive Maintenance</b> This section will cover the identification , diagnoses and repair of clutches, power takeoffs, heavy duty transmissions, transfer cases, final drives, preventive maintenance and failure analysis.</p>	<b>53 hours</b>
<p><b>Agricultural Harvesting Equipment</b> This section includes the description and adjustments found on forage harvesters and combines</p>	<b>38 hours</b>
<p><b>Seeding Equipment, Workplace Coaching Skill and Advisory Network</b> This section covers descriptions and adjustments on various types of seeding equipment used in western Canada. Workplace coaching skill and advisory networking prepares the students for working in a trades career mentoring apprentices and networking with other parties of interest involved in the apprenticeship network.</p>	<b>23 hours</b>
<p><b>Braking Systems</b> Hydraulic brake systems used in agricultural equipment will be covered in this section. Included in this would be system fundamentals, drum and disc brake systems, boosters, service and diagnostic procedures.</p>	<b>24 hours</b>
<p><b>Precision Farming Systems</b> This section is a detailed study of GPS, yield monitors and variable rate systems. After successful completion of this section, a student will be able to operate and interpret information gathered by these systems.</p>	<b>39 hours</b>
<p><b>Apprenticeship Technical Training</b></p>	<b>240 hours</b>

## THIRD SESSION JOHN DEERE TECH

<p><b>JD Harvesting and Seeding Equipment</b></p> <p>This course provides an in-depth study of current John Deere harvesting equipment with emphasis on, operation, adjustment and diagnostic procedures. The student will also, study current John Deere seeding equipment emphasis will be placed on, operation, adjustments and diagnostic.</p>	<b>44 hours</b>
<p><b>Ag Management Solutions (AMS)</b></p> <p>This course is an advanced study of operation and diagnostic techniques of the John Deere AMS system. After completion of this course, students will be able to operate and diagnose an AMS system.</p>	<b>20 hours</b>
<p><b>Personal Finance</b></p> <p>This course is designed to assist the student in personal financial planning. Students will learn about a variety of topics from balancing a cheque book to making investments.</p>	<b>8 hours</b>
<b>JD Tech Training</b>	<b>72 hours</b>
<b>Work Experience Required</b>	<b>1500 hours</b>

## FOURTH PERIOD AGRICULTURAL EQUIPMENT TECHNICIAN

### **Advanced Hydraulics**

**114 hours**

This Advanced Hydraulics section covers hydraulic principles, pump fundamentals, pump service, actuator fundamentals and service, hydraulic system types, testing and service, and electro hydraulics.

### **Suspension & Steering Systems and Accessories**

**34 hours**

This section covers the diagnosing and servicing of off road steering and suspension systems. Also covered in this section are off road protective structures, ground engaging tools, electrical accessories and their service.

### **Power Trains III**

**92 hours**

Power Trains III covers gearing principles, torque converters, power shift and automatic transmissions mechanical components, power shift and automatic shifting controls. The course covers the fundamentals of hydraulic retarders tracked equipment steering, undercarriage final drives, drive axles, differentials and clutches. Servicing of power shift and automatic transmissions, tracked equipment, undercarriage, final drives, drive axles, differentials and clutches is also included in this section

### **Apprenticeship Technical Training**

**240 hours**

## FOURTH SESSION JOHN DEERE TECH

<p><b>Service Advisor II</b> This course is an in depth study of John Deere Service Advisor service tool and familiarizing the students with the capabilities of this tool. Extensive hands on exercises on live units accompanied with instructor lead lessons expand students confidence.</p>	<b>20 hours</b>
<p><b>JD Air Conditioning and Heating</b> Will specifically deal with air conditioning and heating systems specific to John Deere Equipment. Emphasis will be on diagnostics testing procedures.</p>	<b>20 hours</b>
<p><b>JD Power-shift Diagnostics</b> Specific trouble shooting, diagnostic, test procedures and calibration will be covered in this section.</p>	<b>6 hours</b>
<p><b>Field Service Technician</b> The student will be introduced to the job of being a successful JD Field service technician.</p>	<b>6 hours</b>
<p><b>Personal Finance</b> The student will conclude the series of financial planning.</p>	<b>6 hours</b>
<p><b>John Deere Tech Graduation</b> The last Friday afternoon of the training dedicated to celebrating the accomplishments of the fourth period John Deere Tech students in completion of their program. Students are expected to invite family members and dealer principle personnel to attend this celebration.</p>	<b>6 hours</b>
<p><b>JD Tech Training</b></p>	<b>4 hours</b>
<p><b>Work Experience Required</b></p>	<b>62 hours</b>
	<b>1500 hours</b>

## Suggested Tool List

When entering the program the student should consider the following basic tool set:

### Punches:

1/8" Pin Punch  
 5/32" Pin Punch  
 3/16" Pin Punch  
 1/4" Pin Punch  
 1/8" Starting Punch  
 1/4" Starting Punch  
 Brass Drift Punch 1/2" & 3/4" diameter  
 Center Punch

### Pliers:

4" Vice Grips with cutter  
 6" Vise Grips Needle Nose  
 10" Vise Grip Pliers w/Cutter  
 6" Needle Nose Pliers  
 7" Diagonal Pliers  
 Combination Pliers  
 Internal/External Snap Ring Pliers

### Screwdrivers:

Standard Tip Screwdriver Set  
 No. 1 Phillips Screwdriver  
 No. 2 Phillips Screwdriver  
 No. 3 Phillips Screwdriver  
 No. 4 Phillips Screwdriver  
 Torx Driver Set .195 - .520

### Socket Sets:

1/2" SAE Drive Set 22pc 12pt  
 1/2" Metric Drive Set 10 pc 12pt  
 1/2" Metric Drive Set 11 pc 6pt  
 1/2" Drive Deep Sockets 10-27mm  
 1/2" Drive Deep Sockets 3/8-1 1/4"  
 3/8" Metric Drive Set 14pc 12pt  
 3/8" SAE Drive Set 4" & 6" extensions  
 3/8" Metric Drive Set 6pt  
 3/8" Drive 10-21mm deep sockets  
 3/8" Deep Socket Set 3/8-1"  
 1/4" SAE Drive Set 12pc 6pt  
 1/4" Metric Drive Set 6pt (5-13 mm)  
 Socket Set Drive Size Adapters

### Hammers:

1 lb. Ball Peen Hammer  
 2 lb. Ball Peen Hammer  
 Compothane "Dead Blow" Hammer 2 lb.  
 Engineer's Hammer 3 lbs.

### Gauges:

.0015"- .030" Feeler Gauge Set  
 Metric Feeler Gauge Set

### Wrenches:

12pt Comb. Wrenches SAE & Metric  
 12pt Comb. Wrenches Metric 19 pce  
 1/2" Torque Wrench 250 lbs.  
 Allen Wrench Set SAE & Metric

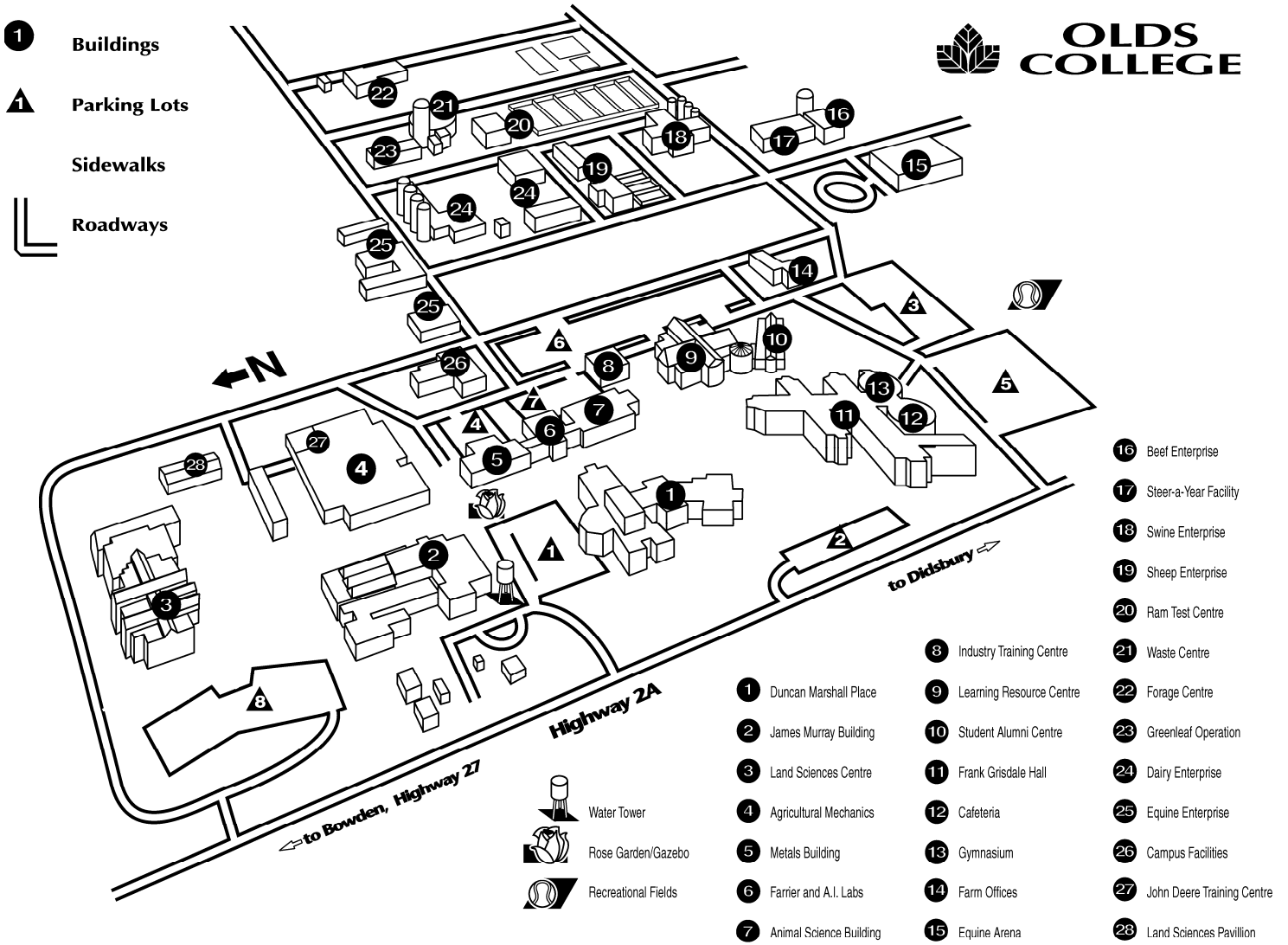
### Chisels:

3/8" Cold Chisel  
 1/2" Cold Chisel  
 5/8" Cold Chisel  
 7/8" Cold Chisel

### Miscellaneous:

**Safety Glasses**  
**Ear Protectors**  
 16" Rolling Head Bar  
 18" Pry Bar-Straight  
 Gasket Scrapper  
 Hacksaw with blades  
 8" x 5/16" Round File w/handle  
 10" Single Cut Mill File w/handle  
 25 ft. Steel Tape  
 Magnetic pickup tool  
 Small mirror  
 4-way Pick Set  
 "O" Ring Tool Set  
 3/8" Drive 5/8" Spark Plug Socket  
 3/8" Drive 13/16" Spark Plug Socket  
 Wire Brush  
 Utility Knife  
 12 in. Adjustable Wrench  
 26 in. 10 Drawer Chest 4,358 cu. in.

Note: JD Tech students qualify to purchase John Deere tools and John Deere tool boxes at discounted prices through the "Tools for Tech Students Program". Information on the program can be found on the Careers Partnerships website through a John Deere dealers "Pathways" web access.



## NOTES