

# WELSH BLACK

## ‘The Brood Cow Breed’



# About Myself

- born on a mixed operation 14 miles NW Olds
- 8 Years of 4-H Experience
- 19 Years Old
- Avid farmer and
- Outdoorsman
- 110 crossbred cows



# Welsh Black

## Randy and Paulette Kaiser

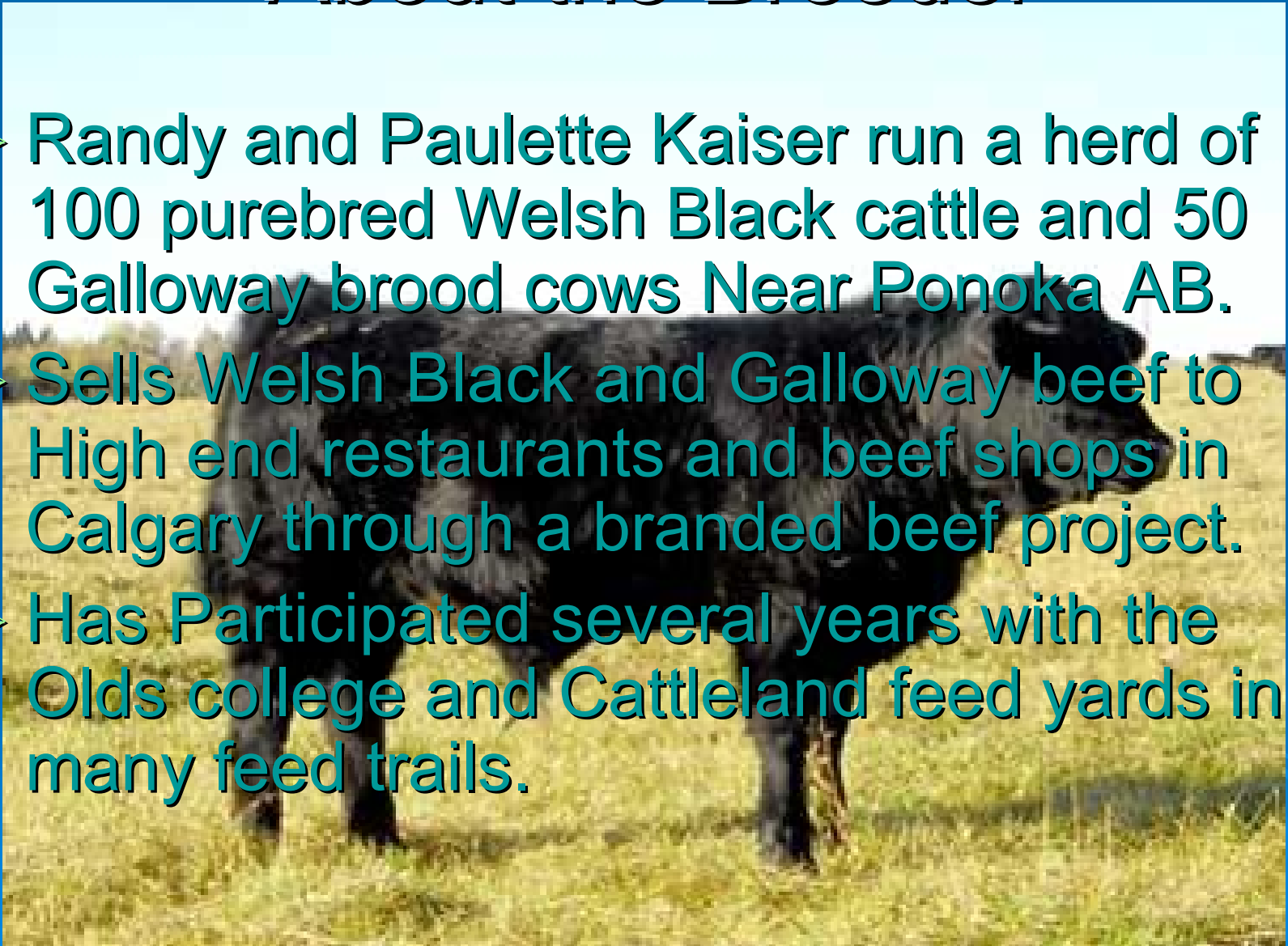
[www.kaiserscelticcattle.com](http://www.kaiserscelticcattle.com)



Presented by  
Cam Bluck

# About the Breeder

- Randy and Paulette Kaiser run a herd of 100 purebred Welsh Black cattle and 50 Galloway brood cows Near Ponoka AB.
- Sells Welsh Black and Galloway beef to High end restaurants and beef shops in Calgary through a branded beef project.
- Has Participated several years with the Olds college and Cattleland feed yards in many feed trails.



# History

- Welsh black cattle are an old breed. bred and developed in Wales for well over 1000 years
- Divided into two breeds; North Wales were stockier beef animals while South Wales were predominantly Dairy animals
- First Welsh Black Cattle Society was established in 1882



# Characteristics



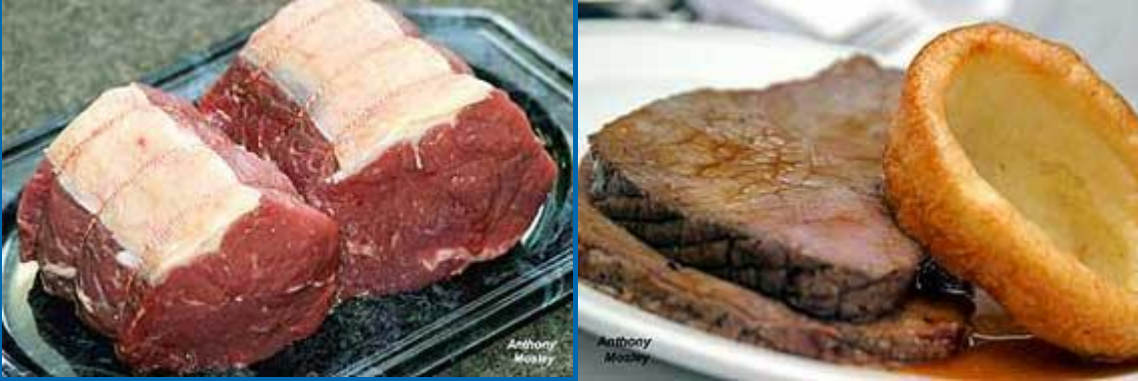
- Extremely thrifty and hardy- No pinkeye or sun burnt udders, tough durable black hoof, less prone to injury.

# Characteristics cont'd

- Standard 283 day cycle in tough range conditions
- These well disposition cows are considered prime at 10 years
- 70-90 pound BW with less than 2% assist rate
- Among the fastest growing British Breeds



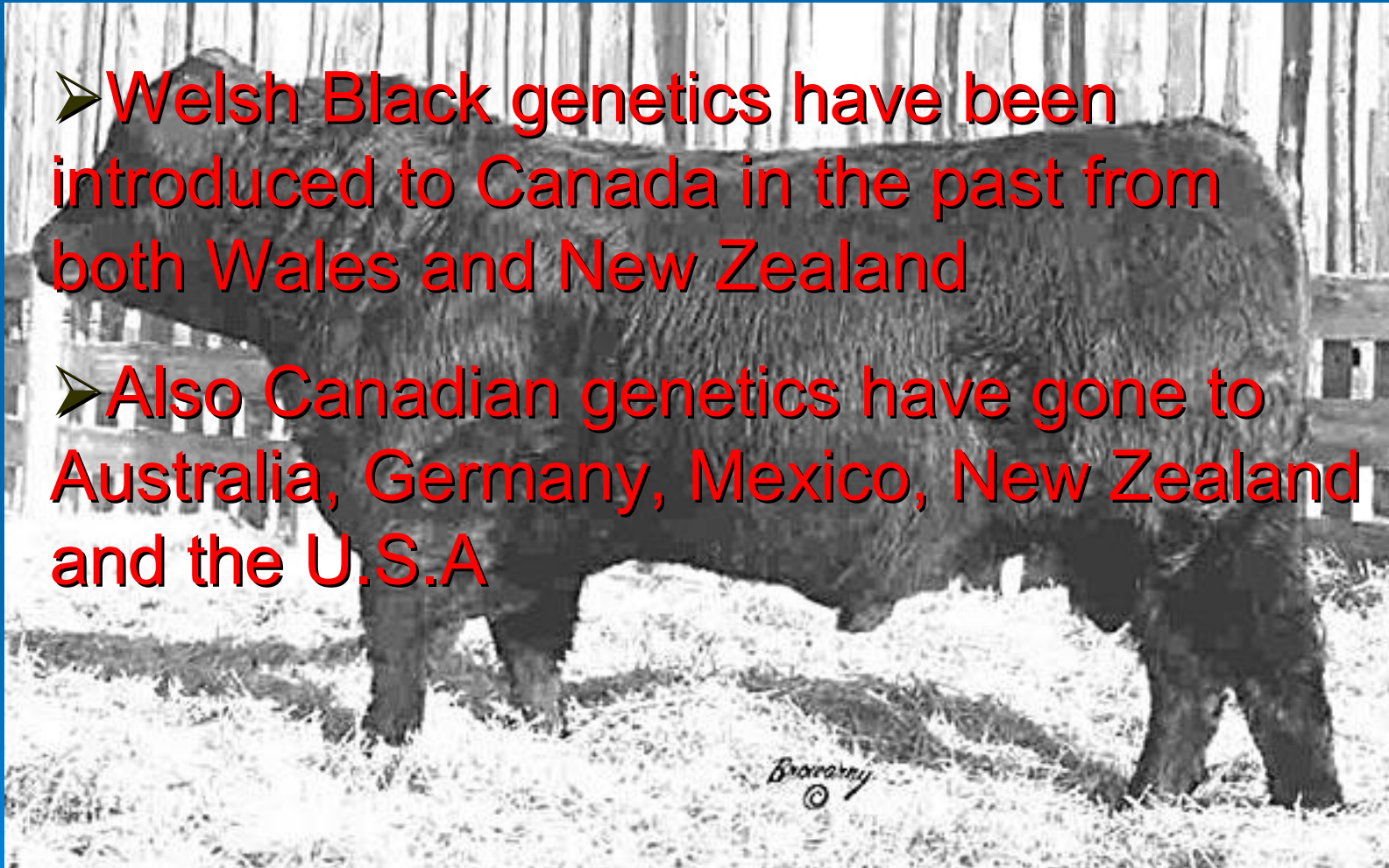
# Welsh Black Meat



- Welsh Black beef is among the finest in the world, used by top chefs and restaurants across the UK and the world.

# Genetics exchange

- Welsh Black genetics have been introduced to Canada in the past from both Wales and New Zealand
- Also Canadian genetics have gone to Australia, Germany, Mexico, New Zealand and the U.S.A



# 2008 STEER-A-YEAR

	Welsh Black	Average SAY
➤ Rate of Gain	3.6 lb/day	3.65
➤ Marbling	4.3	4.55
➤ Rib Eye	11.5 in <sup>2</sup>	10.94
➤ Lean Meat Yield	62.05%	61.36
➤ Back fat	5.43mm	6.14
➤ Feed Efficiency	<u>3.86</u> lb feed/ lb Gain	<u>4.32</u>
➤ Weight adjusted REA in <sup>2</sup> per 100	– <u>1.32</u>	<u>1.18</u>

# *Crossbreeding Advantage*

**Welsh Black cattle offer:**

- ✓ **Calving ease, docility, milk product and virility**
- ✓ **Maternal Sires, longevity, profitability**
- ✓ **Meat quality, growth rate and feed conversion**



# Colour

The Red Recessive gene will occasionally appear in a black and without exception will always breed true.



# Summary

- Welsh Black Cattle provide a world renowned reputation for meat quality and beef production that will parallel any beef breed in the world.



# References

- Thank you to Randy's own site for many of the pictures as well as The Canadian Welsh Black association web page and the Welsh Black association page based in Europe.
- The Olds College also provided all the Steer - A - Year results as well as numerous other data.